

A more student-friendly

ee **Vaasa**  *ee*

**The municipal and county
election programme 2025**



More affordable housing

Vaasa must remain a student-friendly city where affordable housing is guaranteed to all students. Advancing housing solutions is key, especially now that student intake in higher education increases, and the city aims to grow. According to the report Student-friendly Vaasa 2024, almost one in two students said finding accommodation was challenging. The needs of student housing must be considered in zoning.

- The increasing demand for student housing must be acknowledged in zoning, and affordable lots must be provided.
- Vaasa must create a plan to build housing and meet demand.
- Versatile student housing is available to students in key residential areas.



More work and career opportunities

To make Vaasa an attractive study city, even after graduation, student employment must be promoted.

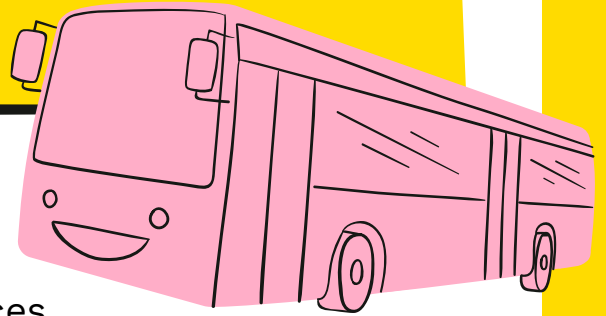
Special attention must be paid to employment and summer job opportunities for first year students.

About sixty percent of students have not applied for or obtained a summer job in the Vaasa region (Student-friendly Vaasa 2024 report).

- Higher education institutions, the city, and companies collaborate to create an action plan for advancing student employment in Vaasa.
- Measures supporting the integration, employment opportunities, and career paths of international students are developed.



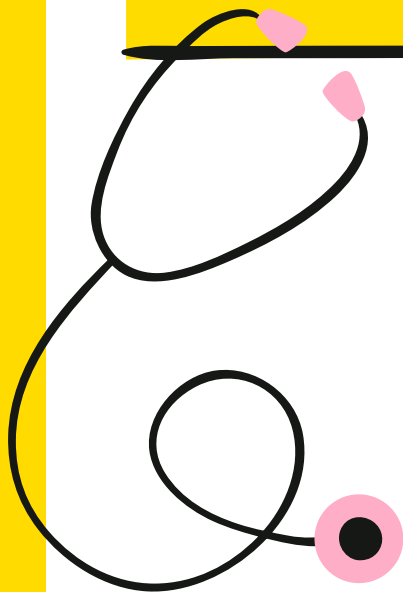
Safer, more sustainable transport



A student-friendly city supports sustainable transport and a safe urban environment. The primary modes of transport among students are walking and cycling, which is why resources must be allocated to promote their development. 72.9 percent of students mainly use non-motorised and public transport (Student-friendly Vaasa 2024 report).

- The network of cycle paths and walkways is improved and its maintenance developed.
- Public transport implements student-friendly schedules to improve students' daily planning. The city of Vaasa carries out a night bus trial.
- Road safety is improved, especially from the standpoint of non-motorised and public transport.

More seamless care pathways



Student healthcare must be seamless to ensure that care reaches everyone promptly and when needed. Student care pathways must be clear to avoid unnecessary bureaucracy and delays.

- The care pathways of students in higher education must be developed between the FSHS and the Wellbeing services county of Ostrobothnia to ensure that students receive timely care in specialised healthcare.
- The referral systems between the Wellbeing services county of Ostrobothnia and the FSHS are harmonised so that care advances without unnecessary manual labor.